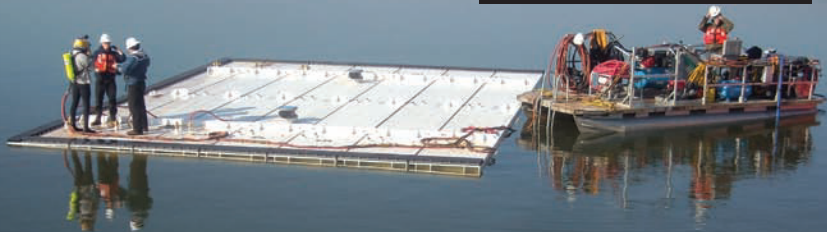




Progress Energy's Tillery Dam creates the impoundment known as Lake Tillery, located on the Pee Dee River near Mt. Gilead, North Carolina. The Tillery Plant features an impressive dam which is 2,800 ft. long and 86 ft. high, with eighteen 35 ft. x 25 ft. tainter gates. The four-unit 87 MW hydroelectric plant has provided safe and reliable peaking and load-following electrical generation since 1928.

## FLOATING BULKHEADS



### Water Control Gates:

- Floating Bulkheads
- Crest Gates
- Roller Gates
- Jet Flow Gates
- Broome Gates
- Tainter Gates
- Bonneted Gates
- Slide Gates
- Miter Gates

### Valves:

- Fixed Cone Valves

### Gate Operating Systems:

- Hydraulic Systems
- Cable Drum Hoists
- Electric Operators
- Manual Operators



Steel-Fab designed and manufactured a 41 ft. x 27 ft. seven caisson floating bulkhead to create a safe, temporary, dry work environment for Progress Energy's tainter gate rehab project. Steel-Fab's floating bulkhead can be removed from the water and securely stored on land for future dewatering of each tainter gate bay.



**STEEL-FAB, INC.**

### Main Plant

430 Crawford Street  
Fitchburg, MA 01420 USA  
Tel. 978-345-1112  
Fax 978-343-7925  
[www.steelfabinc.com](http://www.steelfabinc.com)

### Engineering & Sales

552 Oak Hill Road  
Fitchburg, MA 01420 USA  
Tel. 978-345-0035  
Tel. 978-345-0067  
Email: [sales@steelfabinc.com](mailto:sales@steelfabinc.com)